



LITHIA MOTORS

HEADQUARTERS

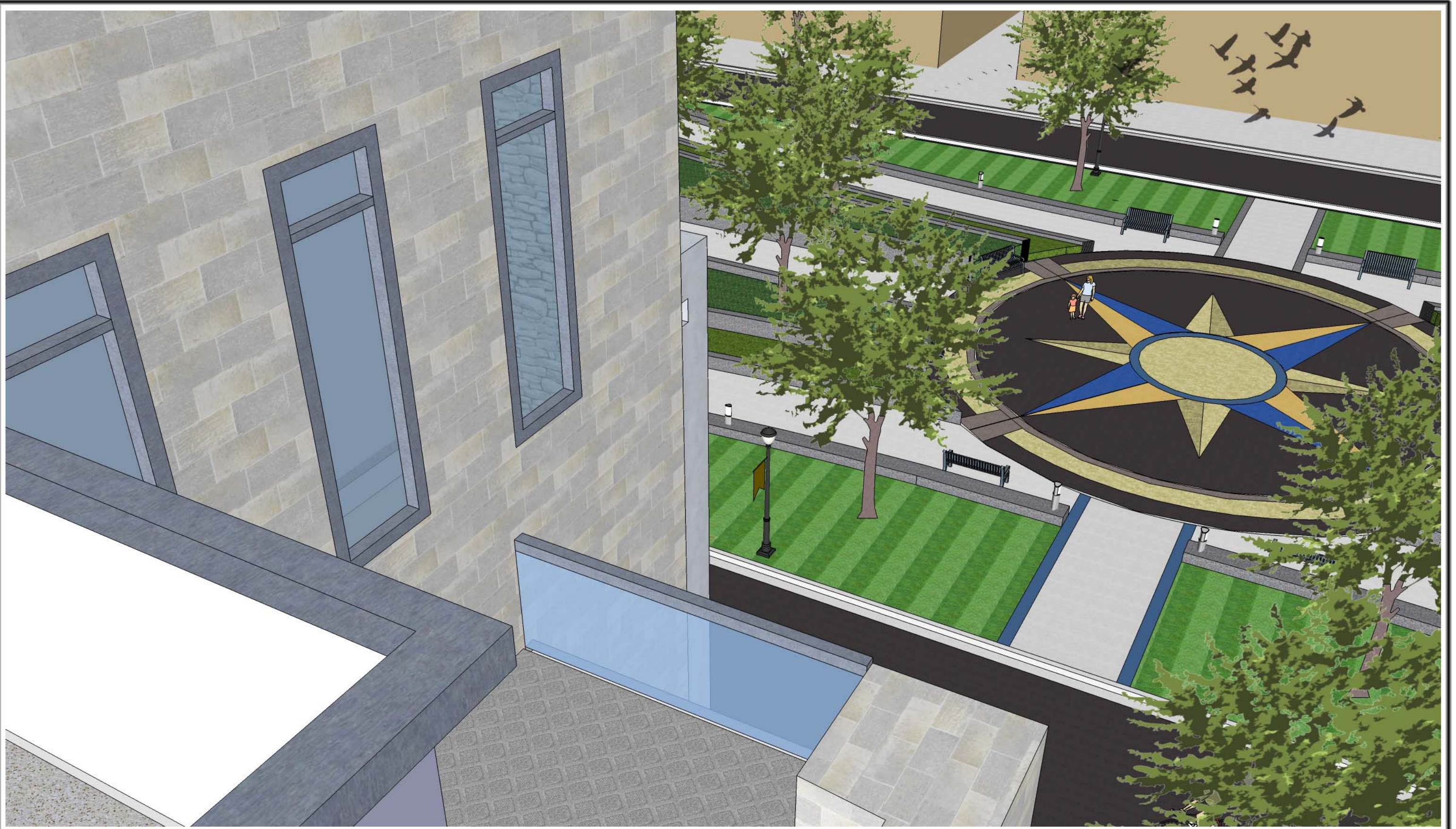
Version 1

ARCHITECT: KEVIN WILLIAMS











KHW ARCHITECTURE
707.703.9500

LITHIA MOTORS - HEADQUARTERS
MEDFORD, OREGON VER-1 "VIEW 5" APRIL 17, 2010
KEVIN WILLIAMS, ARCHITECT















LITHIA MOTORS - HEADQUARTERS
MEDFORD, OREGON VER-1 "VIEW 11" APRIL 17, 2010
KEVIN WILLIAMS, ARCHITECT





LITHIA MOTORS - HEADQUARTERS
MEDFORD, OREGON VER-1 "VIEW 12" APRIL 17, 2010
KEVIN WILLIAMS, ARCHITECT





LITHIA MOTORS - HEADQUARTERS
MEDFORD, OREGON VER-13 "VIEW 1" APRIL 18, 2010
KEVIN WILLIAMS, ARCHITECT





LITHIA MOTORS - HEADQUARTERS
MEDFORD, OREGON VER-1 "VIEW 14" APRIL 17, 2010
KEVIN WILLIAMS, ARCHITECT







KHW ARCHITECTURE
707.703.9500

LITHIA MOTORS - HEADQUARTERS

MEDFORD, OREGON VER-1 "VIEW 16" APRIL 17, 2010
KEVIN WILLIAMS, ARCHITECT





LITHIA MOTORS - HEADQUARTERS
MEDFORD, OREGON VER-1 "VIEW 17" APRIL 17, 2010
KEVIN WILLIAMS, ARCHITECT





LITHIA MOTORS HEADQUARTERS

Version 1

ARCHITECT: KEVIN WILLIAMS